

M3M

Our Expertise. Your Joy.

TRANSFORMING
SKYLINES

GROWING WITH A VISION

OF 200+ ACRE
INTEGRATED
DEVELOPMENT



NOW TRANSFORMING
A NEW ZONE

SMART CITY DELHI AIRPORT



INTRODUCING YET ANOTHER
MARVEL WHICH WILL CREATE A
NEW BENCHMARK IN RESIDENTIAL
LIFESTYLE...



FOR THE ONE WHO LIVES
A ROYAL LIFE...



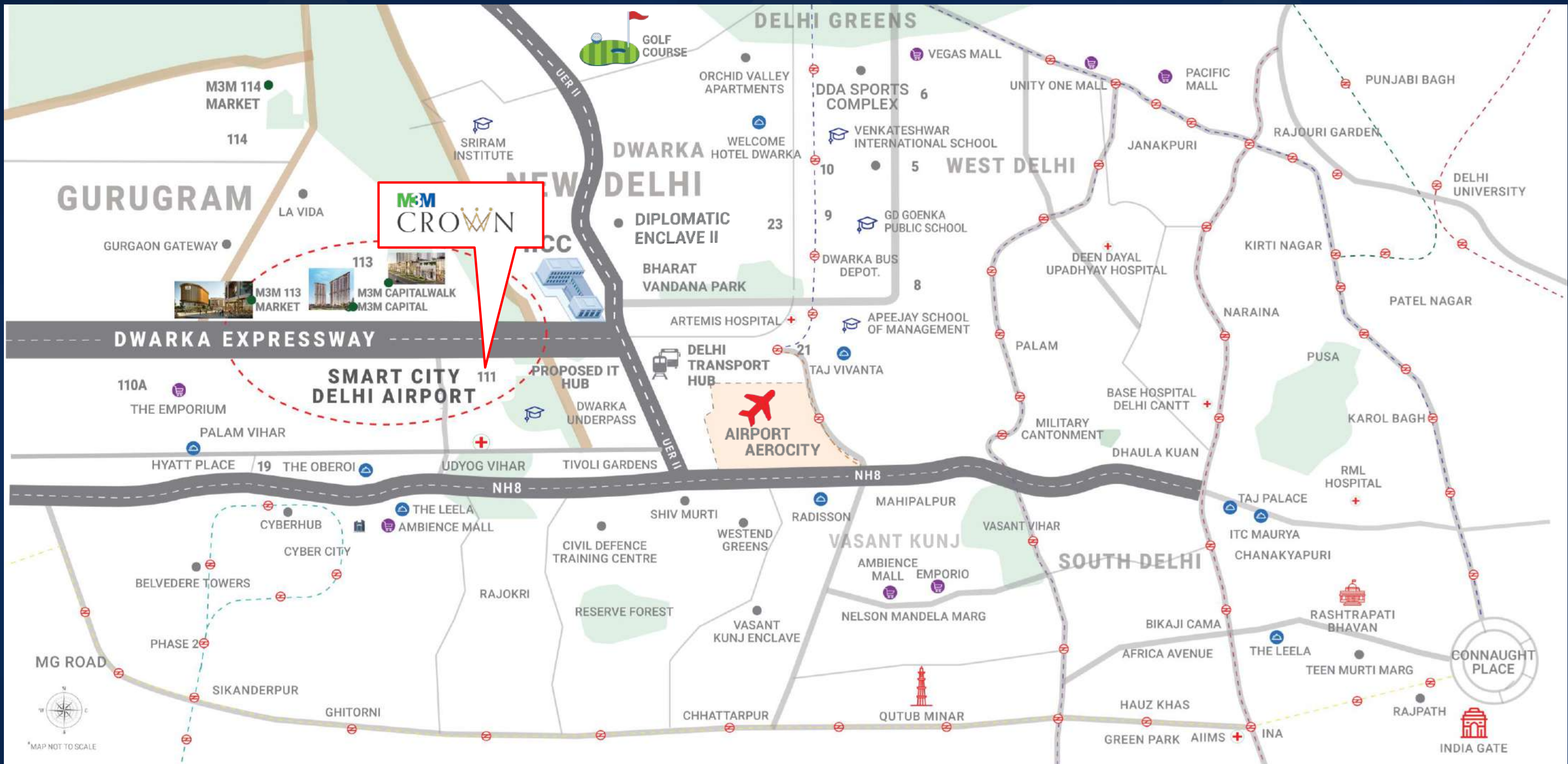
FOR THE ONE WHO LIVES
A LEGACY..

UNVEILING ...

M&M

CROWN

YOUR NEW ADDRESS OF LUXURY



M&M CROWN

*MAP NOT TO SCALE



A wide-angle photograph of a modern, high-end hotel lobby. The space is characterized by its clean lines and sophisticated design. In the center, a large, intricate chandelier with a complex, crystalline structure hangs from the ceiling. Below it, several round dining tables are arranged, each surrounded by modern, upholstered chairs. To the left and right, there are lounge areas with plush, light-colored sofas and armchairs. The walls are a mix of dark wood paneling and large glass windows that offer a view of a cityscape at dusk. The lighting is warm and ambient, highlighting the textures of the furniture and the architectural details. The overall atmosphere is one of luxury and elegance.

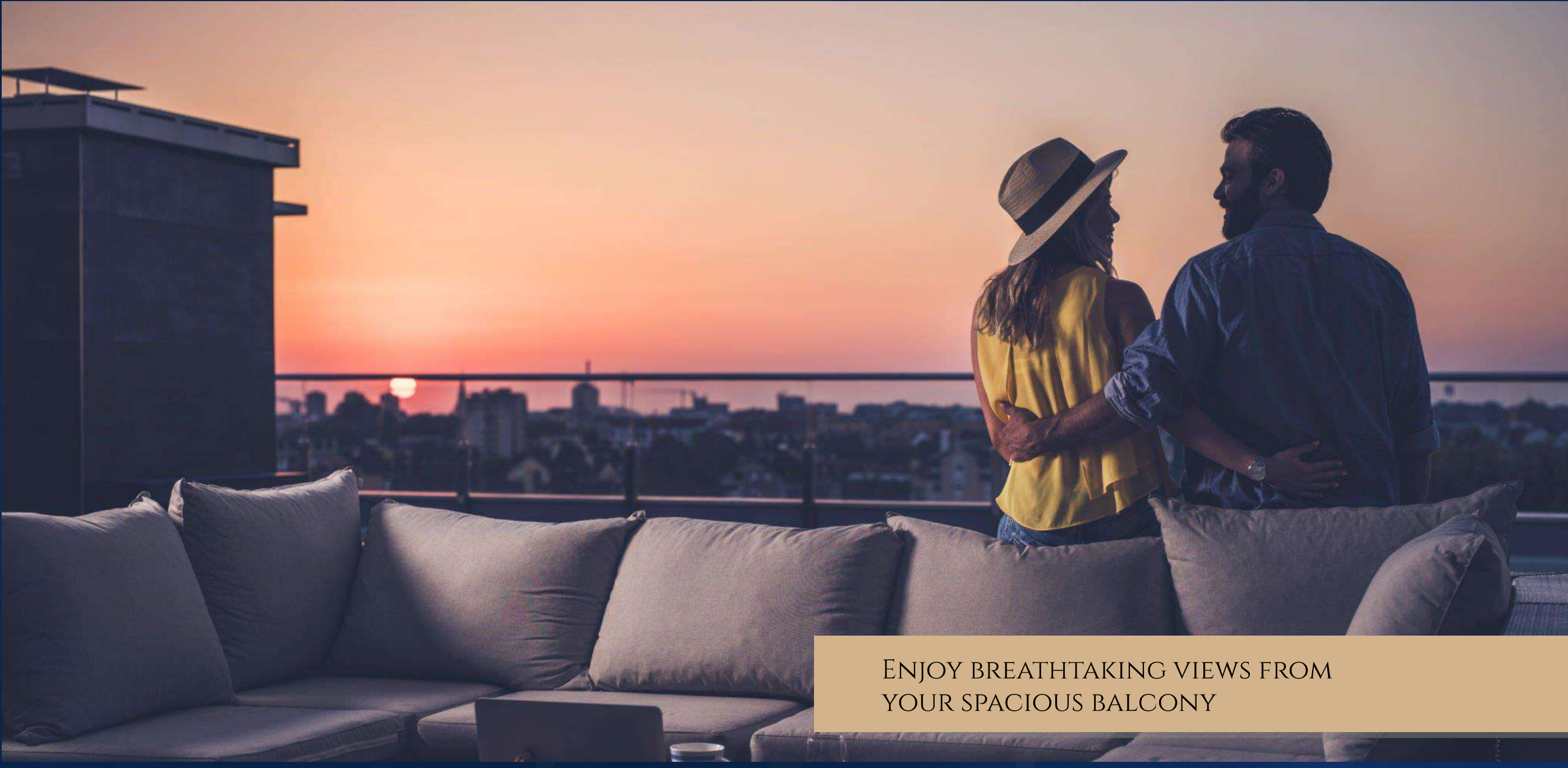
GRAND LOBBY CRAFTED FOR YOUR
ROYAL ENTRY



BLISS-OUT IN EXQUISITE INTERIORS



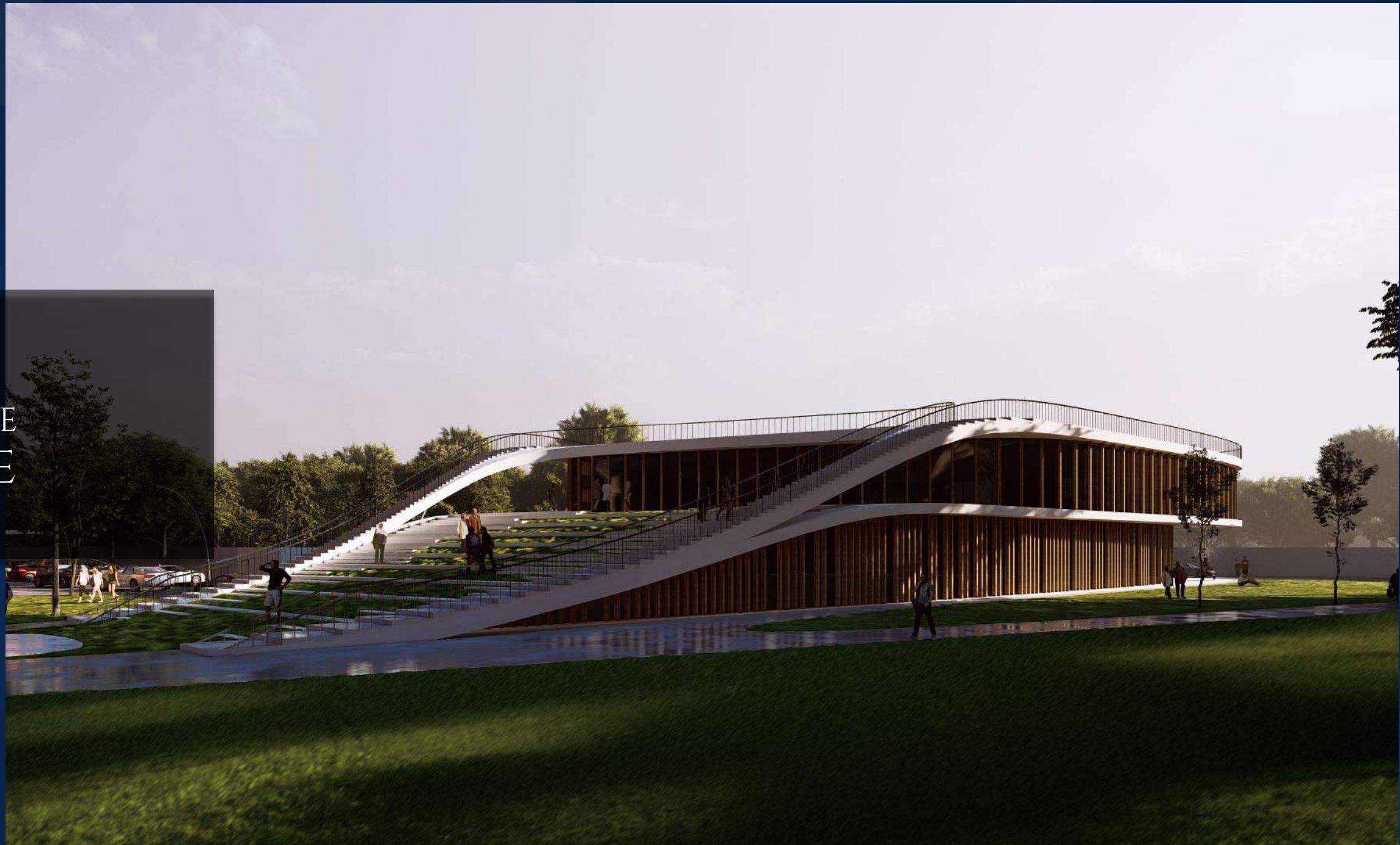




ENJOY BREATHTAKING VIEWS FROM
YOUR SPACIOUS BALCONY



AN EXTRAVAGANCE
CLUBHOUSE



An architectural rendering of a modern rooftop clubhouse. The building features a large, curved, white concrete structure with a green roof. A prominent feature is a wide, multi-level staircase with white steps and a metal railing, leading up to the roof. The roof is covered in lush green grass and has several people walking on it. To the right, a tall building with a distinctive orange-brown lattice facade is visible. In the background, there is a body of water and a parking lot with several cars. The overall scene is set in a lush, green environment.

ROOFTOP SITTING ON CLUBHOUSE

FOR THE ONES WHO LIVE LIFE KING SIZE...



A LIFESTYLE
PERFECT IN
EVERY SENSE

Swimming
Pool



Spa



Bowling Alley



Snooker



CLUB
HOUSE

Library



Games Room



Mini Theatre



Health Cafe



A SITE FLOODED WITH AMENITIES

- 5.5-acre Central Landscape With Spaces For Community And Social Activities
- Central Greens Surrounded With 1.1 Km Of Pathway
- Shaded Walkways For Easy Pedestrian Movement
- Thoughtfully Designed Lake, An Unparallel Experience With Nature
- A Magnanimous 75,000 Sq. Ft. Of Amenities
- Located On The Dwarka Expressway, Well Connected To The Airport



5.5 ACRES
OF LUSH GREENS



1556 SQ. M.
OF POOL AREA



1115 M.
OF WALKWAY

